

**Peerless**  
NO MATTER WHAT.



**TALON** WALL<sup>®</sup>





# REVOLUTIONARY CURTAIN WALL SYSTEM

A GROUNDBREAKING UNITIZED CURTAIN WALL SYSTEM REDEFINING THE SKYLINE OF MODERN COMMERCIAL HIGH-RISE CONSTRUCTION.

The Talon Wall® system, manufactured by Peerless Products Inc., is a revolutionary, patented, fully engineered, unitized, and factory-glazed curtain wall system with fixed and operable components. Each Talon Wall® system has only two components to install: the finished unit and single multi-unit pieces of floor trim. No loose parts are scattered on job sites to get lost or damaged. The anchor is built into the unit as shipped to your site.

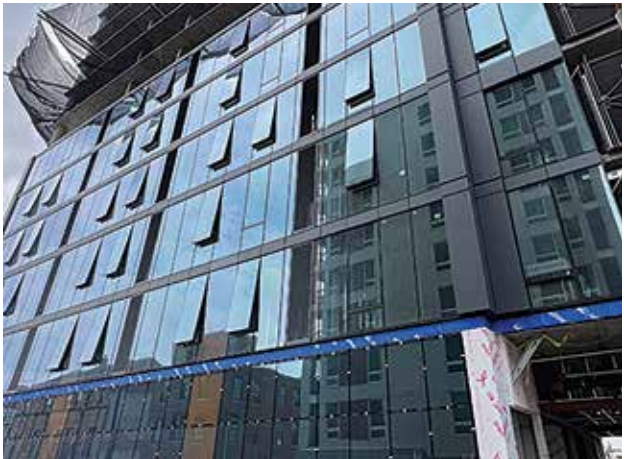
United States Patent | Patent No.: US 9,752,319 B1; 10,094,111; 10,202,764; and 10,233,638 | Date of Patent: Sep. 5 2017



## FEATURES & BENEFITS

Get a Grip on Costs! Double Your Facade Revenue While Reducing Crew Size. Peerless Products' Talon Wall® installs with just one-third of the crew size required for a typical window wall or curtain wall system, all while achieving an enclosure rate greater than that of the most efficient curtain wall systems available.

- Unitized, factory-glazed with built-in anchors.
- Fast installation with 7 man crew at 3 minutes avg. per unit; cuts crew by <sup>2</sup>/<sub>3</sub>.
- Tolerates movement and has seismic available.
- Superior thermal and acoustic performance (STC 58 between floors).
- Fully sealed frames and concealed operable windows.
- Passed 15 lb water, air, and structural tests.
- ASTM E2307 UL 2079 Fire Stops listing, and NFPA 285 Compliant.
- Extensive facade options with a durable powder coat finish.
- Uses sustainable, reusable metal shipping racks.
- Reduces waste and cleanup costs.
- Supports LEED goals.
- Provides overall labor savings.







## IN-HOUSE MANUFACTURING & INDUSTRY LEADING R&D

- World-class innovators delivering unrivaled, *American-made* products.
- Vertically integrated manufacturing producing unparalleled performance through industry leading quality control and manufacturing standards.
- Unmatched service and product warranties ensuring the best experience to the end user.





## HEX

400 Marin Blvd, Jersey City  
New Jersey 07302

**COMPLETE (2025)**

300,000+ Glass Sqft.

A new addition to the completed Peerless Talon Wall® portfolio stands tall as a remarkable skyscraper and a true showcase of the system's capabilities. Completed in record time, the project leveraged the Talon Wall® curtain wall system to save weeks of construction, streamlining installation without sacrificing performance or design. Featuring more than 6,400 Talon Wall® units, this landmark project demonstrates the power, efficiency, and unmatched potential of the Peerless Talon Wall® system.









### **OPTIMA VERDANA**

1210 Central Ave  
Wilmette, IL 60091

**COMPLETE (2023)**

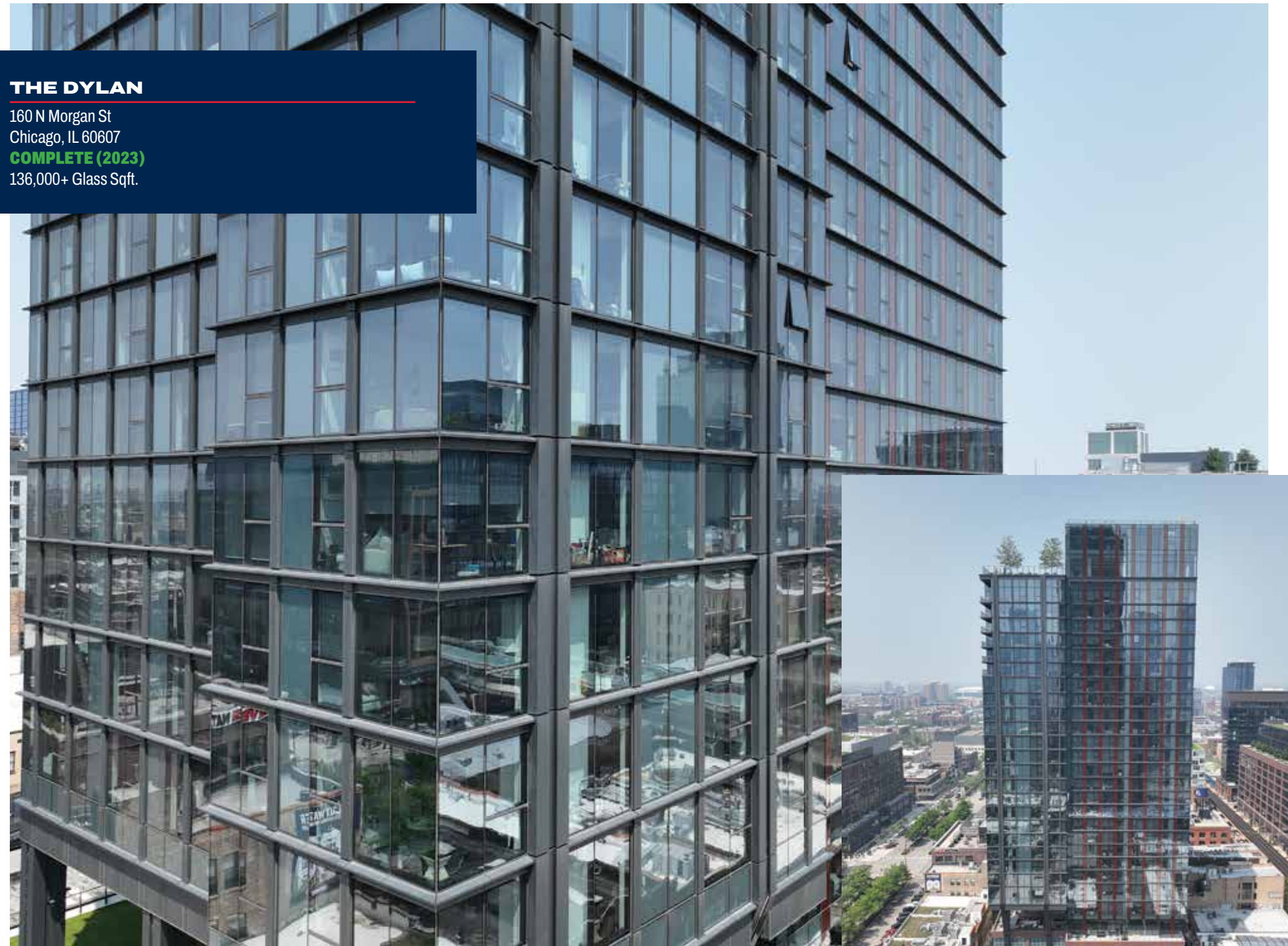
60,000+ Glass Sqft.

### **THE DYLAN**

160 N Morgan St  
Chicago, IL 60607

**COMPLETE (2023)**

136,000+ Glass Sqft.







## EL PASEO

1312 El Paseo de Saratoga  
San Jose, CA 95129  
**IN DEVELOPMENT (TBD)**  
250,000+ Glass Sqft.

El Paseo in San Jose, California. Currently under construction, this landmark development will showcase the advanced performance and sleek design of the Talon Wall® curtain wall system. Engineered for efficiency, speed, and aesthetics, the system streamlines installation while delivering exceptional energy performance and bold architectural presence. As El Paseo takes shape, it stands as a testament to the innovation and strength of Talon Wall® technology.





## CAESARS CASINO

1100 W Main St, Danville  
Virginia 24541  
**COMPLETE (2024)**  
61,000+ Glass Sqft.

Caesars Casino in Virginia, a premier destination that blends world-class entertainment with striking architectural design. The casino features Talon Wall® windows engineered to deliver both bold aesthetics and high-performance efficiency. With streamlined installation and exceptional durability, the Talon Wall® system helped bring this landmark project to life—setting a new standard for style, speed, and innovation in the gaming and hospitality industry.

### “ **Ricky Urbach - A1 Glass**

*I have utilized the Talon Wall® unitized curtainwall system on two large scale casino developments, and its performance has been exceptional. The system offers outstanding quality, streamlined installation, and reliable long-term performance. Talon Wall® has consistently proven to be a dependable solution for complex, high-profile projects.*

”







## TWO KINGS

538 Kings Mountain Blvd, Kings Mountain  
North Carolina 28086  
**IN DEVELOPMENT (2027)**  
146,000 Glass Sqft.

### 24TH & WAVERLY

2359 Harrison St  
Oakland, CA 94612  
**COMPLETE (2024)**  
136,000 Glass Sqft.



### COPPIA

1101 W Van Buren St  
Chicago, IL 60607  
**COMPLETE (2024)**  
122,000+ Glass Sqft.

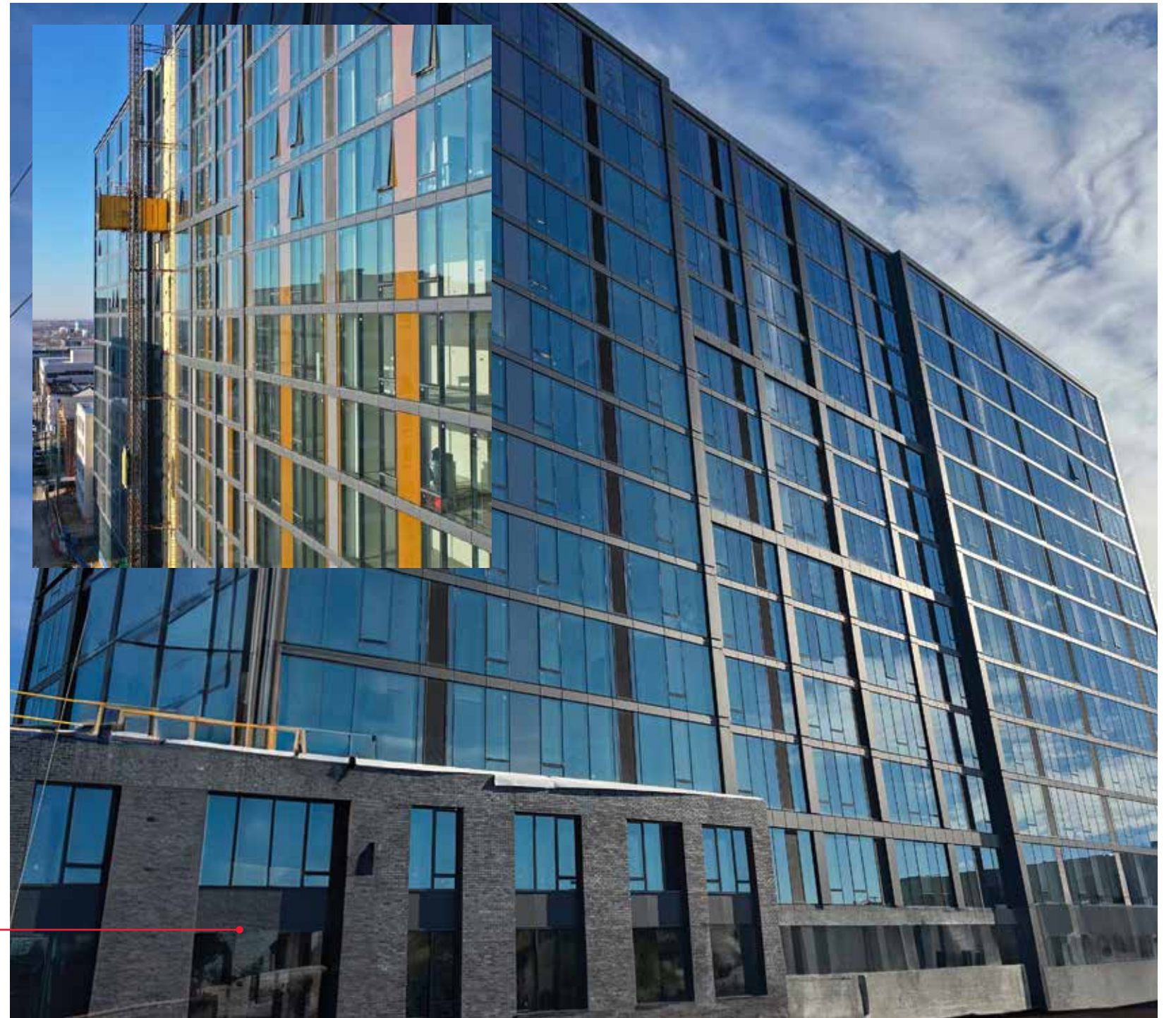






## WIND CREEK CASINO

17300 S. Halsted St, East Hazel Crest  
Illinois 60429  
**COMPLETE (2024)**  
44,000+ Glass Sqft.



### THE PRESS

801 Orange St, Wilmington  
Delaware 19801  
**COMPLETE (2025)**  
75,000+ Glass Sqft.





WEBER THOMPSON

## SLOANE (616 BATTERY)

616 Battery St, Seattle  
Washington 98121  
**IN DEVELOPMENT (2026)**  
207,000+ Glass Sqft.

Rising in the heart of Seattle, 616 Battery—also known as Sloane—is set to redefine the skyline with the power and precision of the Peerless Talon Wall® curtain wall system. Still under construction, this high-rise showcases how Talon Wall® streamlines installation while delivering superior energy performance and bold architectural expression. Designed to meet the demands of modern urban living, Sloane demonstrates the strength, efficiency, and design flexibility that make Talon Wall® the premier choice for today's landmark projects.



**Mark Rust - Washington Glass & Glazing**

*“What stood out most was how smooth the install was. Talon Wall® saved us labor hours and kept the project moving.”*

”







# **CLACKAMAS COURTHOUSE**

1000 Courthouse Rd, Oregon City

Oregon 97045

**COMPLETE (2025)**

33,000 Glass Sqft.







## THE WELLS APTS.

920 N Wells St & 868 N Wells St  
Chicago, IL 60610  
**COMPLETE (2024)**  
296,000+ Glass Sqft.

Towering in Chicago's River North, 920 and 868 N Wells transform the cityscape with the cutting-edge performance of the Peerless Talon Wall® curtain wall system. These striking towers, now complete, highlight how Talon Wall® accelerates installation while achieving exceptional energy efficiency and a bold, modern aesthetic. Purpose-built for the evolving needs of urban living, 920 and 868 N Wells embody the strength, versatility, and design innovation that define Talon Wall® as the premier solution for today's most ambitious architectural projects.



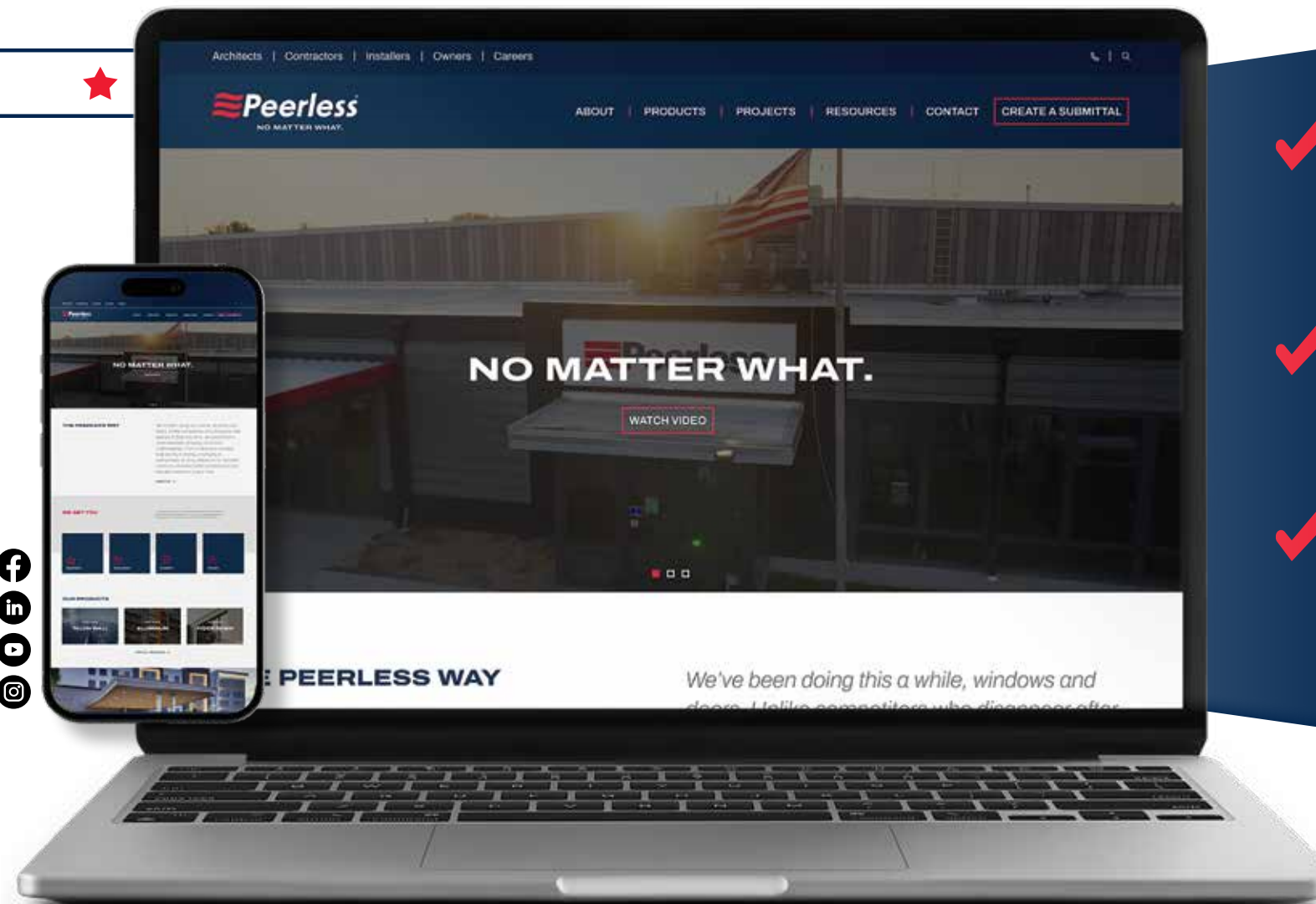
 [www.peerlessproducts.com](http://www.peerlessproducts.com)



## VISIT OUR WEBSITE



SEE EVERYTHING WE HAVE TO OFFER!  
VISIT [PEERLESSPRODUCTS.COM](http://PEERLESSPRODUCTS.COM)



### ✓ **BROWSING PEERLESS, SIMPLIFIED**

Introducing the Peerless Portal. An easy way to browse our wide selection of products to fit the need of your next project.

### ✓ **PERSONALIZED ASSISTANCE**

Our Peerless Representative Map tool helps you find the dedicated representative best suited to assist you.

### ✓ **EXPLORE OUR PRODUCTS**

Discover the perfect solutions for your needs on our Products page at [peerlessproducts.com](http://peerlessproducts.com).



[www.peerlessproducts.com](http://www.peerlessproducts.com)



Peerless Products: (620) 223-4610  
Peerless Innovative Solutions Group: (417) 283-4768  
Peerless Commercial Applications Group: (620) 644-4348



2403 S. Main St, Fort Scott, KS 66701  
1800 N. Industrial Highway, Nevada, MO 64772  
2702 N. State St, Iola, KS 66749





Talon Wall® — A Peerless innovation. The future of curtain wall design.