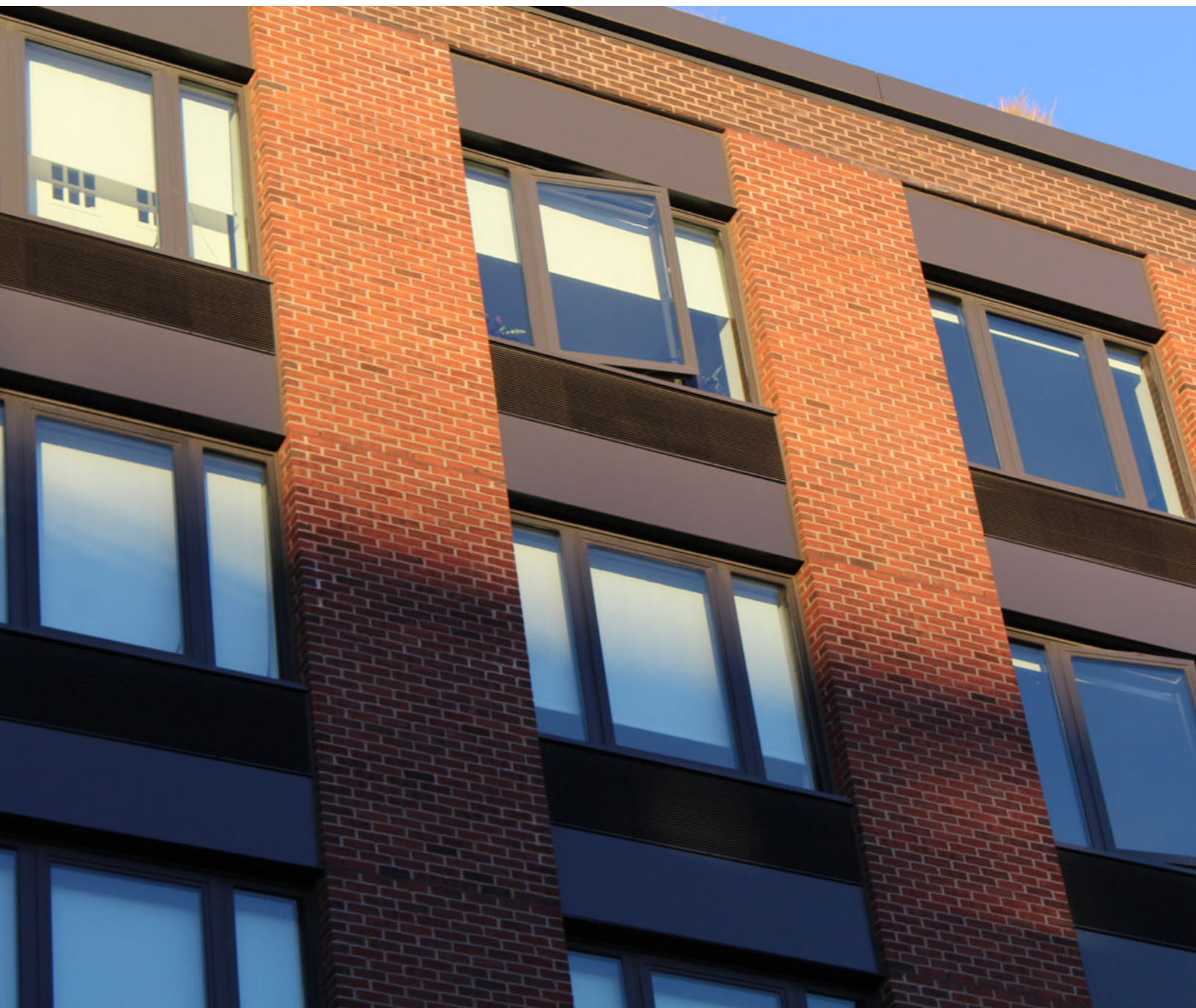


G500 SERIES

OUTSWING CASEMENT

Enhance your building's design with a variety of configurations that add a sleek, architectural touch to your casement windows. Our architectural casement windows come with both right-hand and left-hand hinge options. Designed with advanced thermal breaking technology, these windows deliver superior performance in air, water, and thermal efficiency.





FEATURES AND BENEFITS

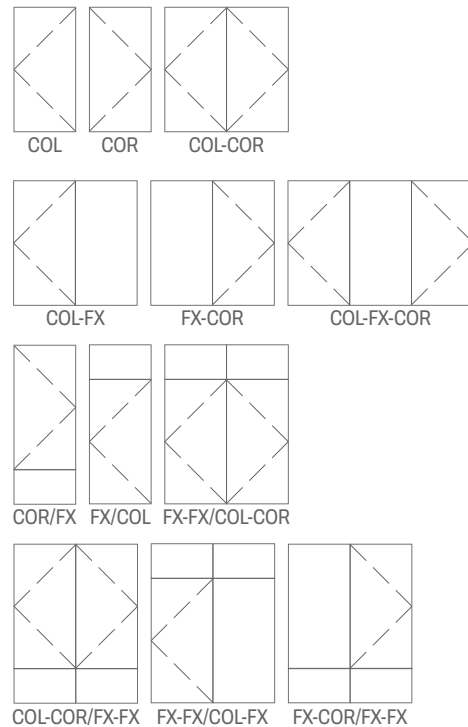
- Versatile frame fits multiple glass types for low U-values
- Color options: wide range of interior/exterior finishes, including metallic powder coats
- Single-handle operation for all perimeter locks
- Optional key handle for secure, locked vent access
- Adjustable vent hardware for easy tuning
- Continuous head, sill, and jamb – no mullions required
- Flange designs minimize field trimming
- Glass film for easier cleaning
- Dry exterior gaskets for simple re-glazing

PRODUCT DATA

	PERFORMANCE
Certification	AW 100
Test Size	36"x60"
U-Value	0.22
Air Infiltration Rate @ 6.24 psf	<0.1 cfm/sf
Water Test Pressure	15 psf
Design Pressure	100 psf
Frame Depth	4 $\frac{1}{4}$ "
Thermal Break Design	Polyamide Strut
Standard Glass Thickness	1"
Glazing Material	Dry Glazed
OITC/STC	Up to 37 / Up to 49

*Glass package may effect data.

TYPICAL CONFIGURATIONS



*Please consult your project engineer for additional configuration options.



VISIT OUR WEBSITE



SEE EVERYTHING WE HAVE TO OFFER!
VISIT [PEERLESSPRODUCTS.COM](https://www.peerlessproducts.com)