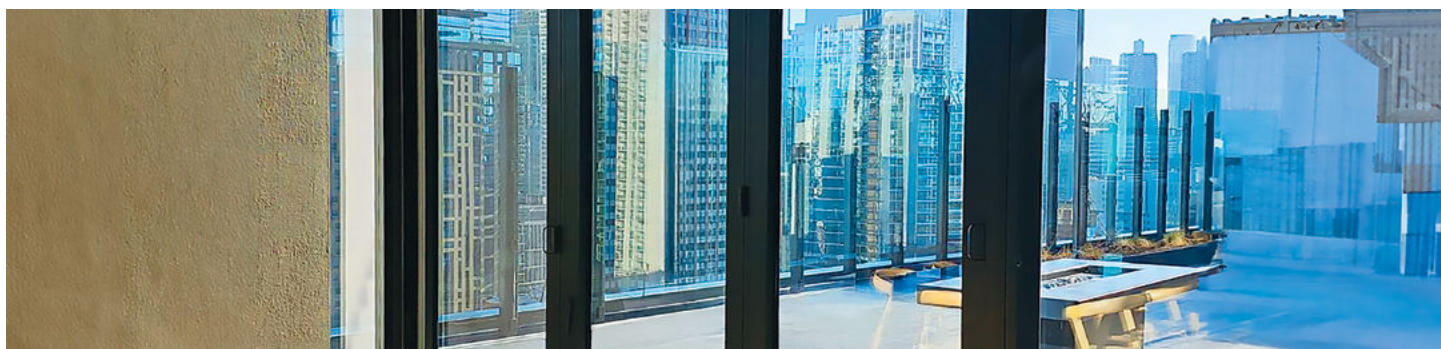


B200 SERIES

INSWING FOLDING DOOR

The Peerless Bi-Fold Door combines expansive views with smooth, effortless operation. Designed to fold and stack neatly to the side, enjoy wide, unobstructed opening that blends indoor and outdoor spaces. Its durable frame and hardware deliver reliable performance, while energy-efficient glass and tight sealing provide comfort and protection. With customizable finishes and configurations, the Bi-Fold Door offers both modern design flexibility and lasting performance.



PRODUCT DATA

	PRODUCT #
Certification	CW 75
U-Value	0.39
Air Infiltration Rate @ 6.24 psf	<0.1 cfm/sf
Water Test Pressure	12 psf
Design Pressure	65 psf
Frame Depth	5½"
Standard Glass Thickness	1"
Glazing Material	Dry Glazed
OITC/STC	Up to 31 / Up to 37

*Glass package may effect data.



**VISIT OUR
WEBSITE**



SEE EVERYTHING WE HAVE TO OFFER!
VISIT [PEERLESSPRODUCTS.COM](https://www.peerlessproducts.com)

FEATURES AND BENEFITS

- ¾" sill sets industry standard for low height
- Achieve ADA compliant ½" sill with floor height
- Full opening capabilities up to 16' wide
- Top-hung design for enduring high performance